

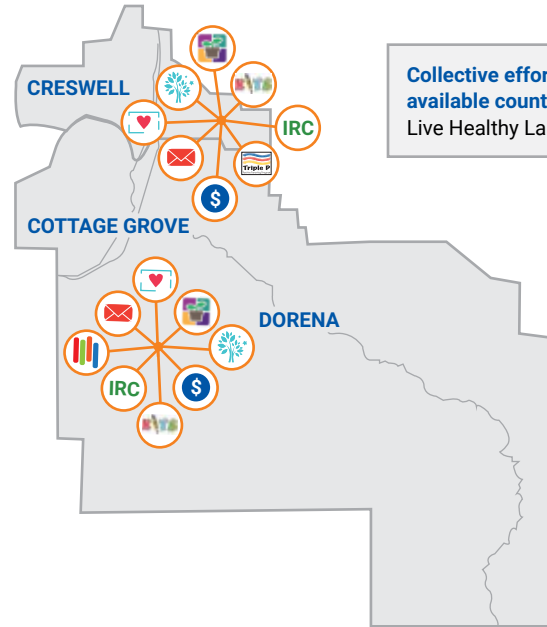


United Way of Lane County

UNITED WAY'S IMPACT SOUTH LANE COUNTY

COMMUNITY STATISTICS

Childhood Poverty Rate:	19.9%
Average alphabet letter recognition by incoming kindergarteners:	12.8
Third Grade Reading Proficiency:	47.6%
High School Graduation Rate:	81.1%



Collective efforts and programs available county-wide: Dental Kits, Live Healthy Lane, Triple P Online

Programs

- BookFest** (1 location): community book drive providing K-2 students at specific schools with age-appropriate books to encourage summer reading
- Community Investment Grants:** 10 programs and initiatives funded by United Way's LIVE UNITED Fund that support child and family success
- Family Resource Center:** resource centers offering family support programs, basic needs assistance, and support with early academic success
- Imagination Library:** Dolly Parton's literacy program mailing a free book each month to children from birth to age five
- Intergenerational Reading Collaborative (RSVP)** (2 locations): volunteer program providing K-3 students with small group reading support

- Kids In Transition to School (KITS)** (2 locations): kindergarten readiness program for kids and families
- LaneKids Parenting Education:** funded partners providing evidence-based education programs
- Preschool Promise** (4 locations): high-quality preschool for families furthest from opportunity
- Triple P: Positive Parenting Program:** individual and group setting parenting education using the Triple P curriculum

Investments

- 15th Night:** builds a youth-informed community movement to end youth homelessness by identifying ways to support unaccompanied homeless youth to stay engaged in school, safely housed and off the street
- CASA:** supports the advocacy needs of children who experienced neglect and abuse and are in the foster care system
- Community Sharing:** provides a wide variety of emergency services and basic needs assistance to residents of South Lane County
- Daisy CHAIN:** provides families with free pre/post-natal support, resources, and education from the stage of expectant parents until 5 years of age
- Direction Service:** provides tailored case management and resources for youth with disabilities and their families
- Food for Lane County:** provides emergency food boxes to low-income families and individuals at emergency food pantries throughout Lane County
- Healthy Homes:** brings together partners committed to building household stability and resilient families, and establishes a

referral network for residents to access physical, behavioral and mental health supports

South Lane Mental Health: provides students with free support through a school-based therapy program and offers a parenting group curricula for youth

Ophelia's Place: delivers prevention-based services in rural elementary, middle and high schools to strengthen students' emotional well-being and support healthy relationships with peers and adults

Pearl Buck Center: offers specialized parenting education, therapeutic preschool, and in-home family supports to parents with cognitive limitations

Station 7 Emergency Youth Shelter: provides 24/7 emergency shelter, crisis intervention, family reunification and other supportive services to youth and families

Volunteers in Medicine: provides free primary and behavioral health care to low-income, uninsured or underinsured Lane County adults

Learn more at unitedwaylane.org/county-impact