



United Way of Lane County

Community Investment Cycle 2013-2015 Letter of Intent Training

December 13 and 15, 2011

Agenda

- ✓ Community Impact Model
- ✓ Community Investment Priorities, Volunteer Leadership, Parameters, and Process
- ✓ Strategic Investments and Basic Needs overview
- ✓ Community Investment Models
- ✓ Letter Of Intent Process
- ✓ Questions?
- ✓ Break-out sessions: Education, Income, Health and Basic Needs

United Way of Lane County Community Impact Model

UNITED WAY OF LANE COUNTY'S GOALS FOR 2020

Investing in the building blocks for a good life

EDUCATION

*Preparing children to
succeed in school and life*

By 2020 the majority of children entering public school in Lane County demonstrate basic literacy proficiency and adequate social/emotional development.

INCOME

*Moving families from
poverty to financial stability*

By 2020 a greater percentage of modest-wage working families will live at or above 250% of the Federal Poverty Line and a greater percentage of modest-wage working families will have at least three months of emergency savings.

HEALTH

*Ensuring people have
access to basic health care*

By 2020 the healthcare needs of Lane County's most vulnerable residents will be met through the community's system(s) of care.

BASIC NEEDS

FOOD SHELTER SAFETY HEALTHCARE ACCESS TO SERVICES

Traditional United Way Model



Community Impact Model



Aligning Efforts of Partners for Collective Impact

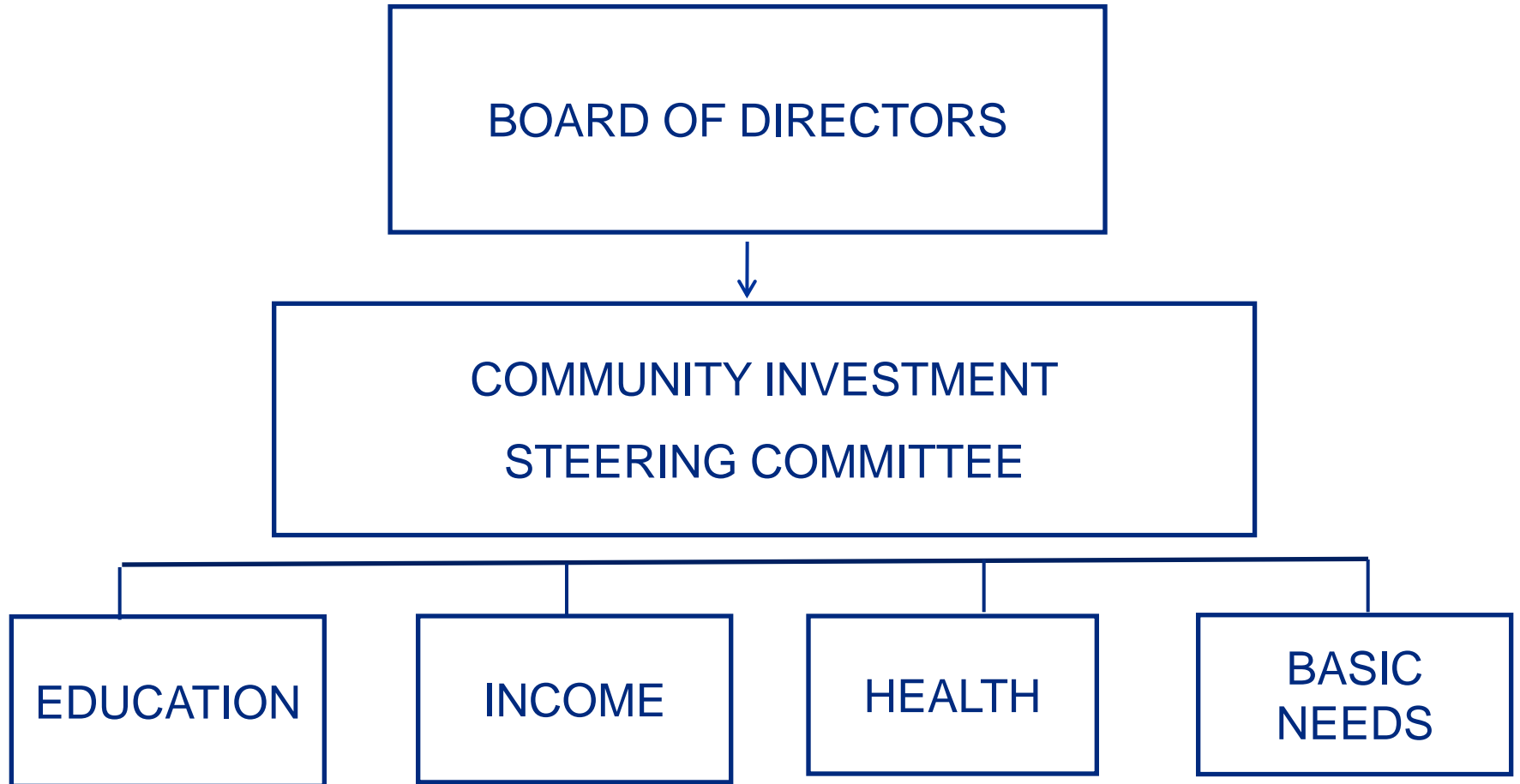
Community Investment Priorities

*Continue to Align Funding for Greater impact on
2020 Goals*

*Efficient use of United Way and agency
resources*

True to Principles and Values

Volunteer Leadership



Community Investment Parameters

- Funding Period **January 1, 2013 - December 31, 2015**
- Strategic Investments
 - Open to all
 - Investments that “move the needle”
 - Funding time frame may vary
- Basic Needs Investments
 - Invitation only
 - 3-yr funding cycle

Community Investment Process

- UW Board has set Basic Needs and Strategic Investment budgets, adopted strategic funding specifications
- Letters of Intent (LOI's) solicited from agencies – due January 20, 2012
- LOI's will be scored by volunteer panels
- UW Board approves invitees – March 2012
- Invited agencies prepare full applications – April 2012
- Applications prepared online

Community Investment Process Cont...

- Applications will be scored by volunteer panels
- Score and discuss applications, formulate questions for agencies
- Site visits and/or interviews with agencies to answer questions
- Final deliberations with budget
- Funding Recommendations to CISC in August – to UW Board in September 2012
- Funding announced to agencies in September 2012
- First payment issued: January 2013

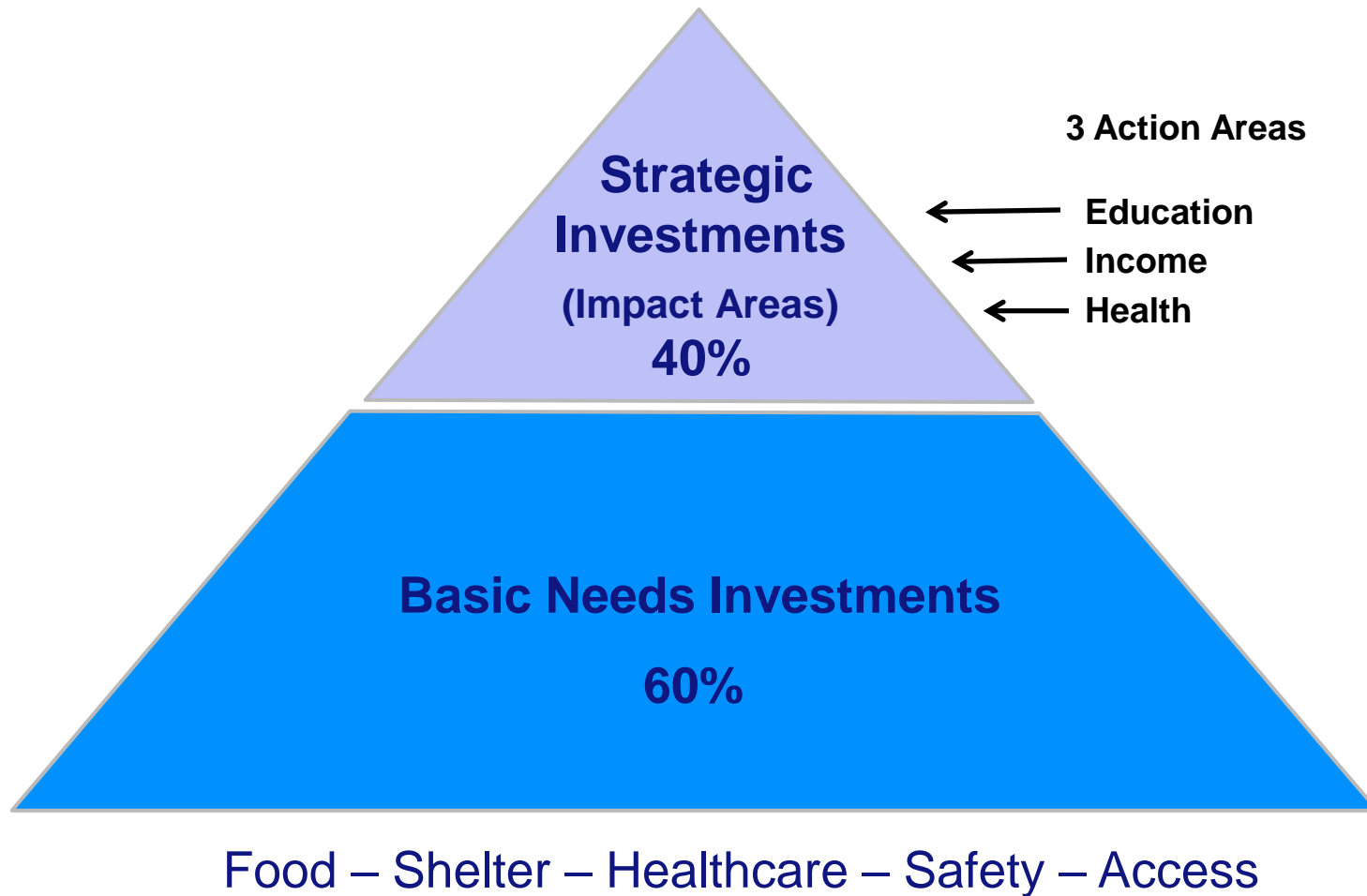
Strategic Investments – Education, Income, and Health

- Specific outcomes that “move the needle”
- Specific target populations
- Established scoring specifications and weights
- Open to all nonprofits in Lane County
- Letters of Intent due January 20, 2012
- Full applications by invitation only

Basic Needs

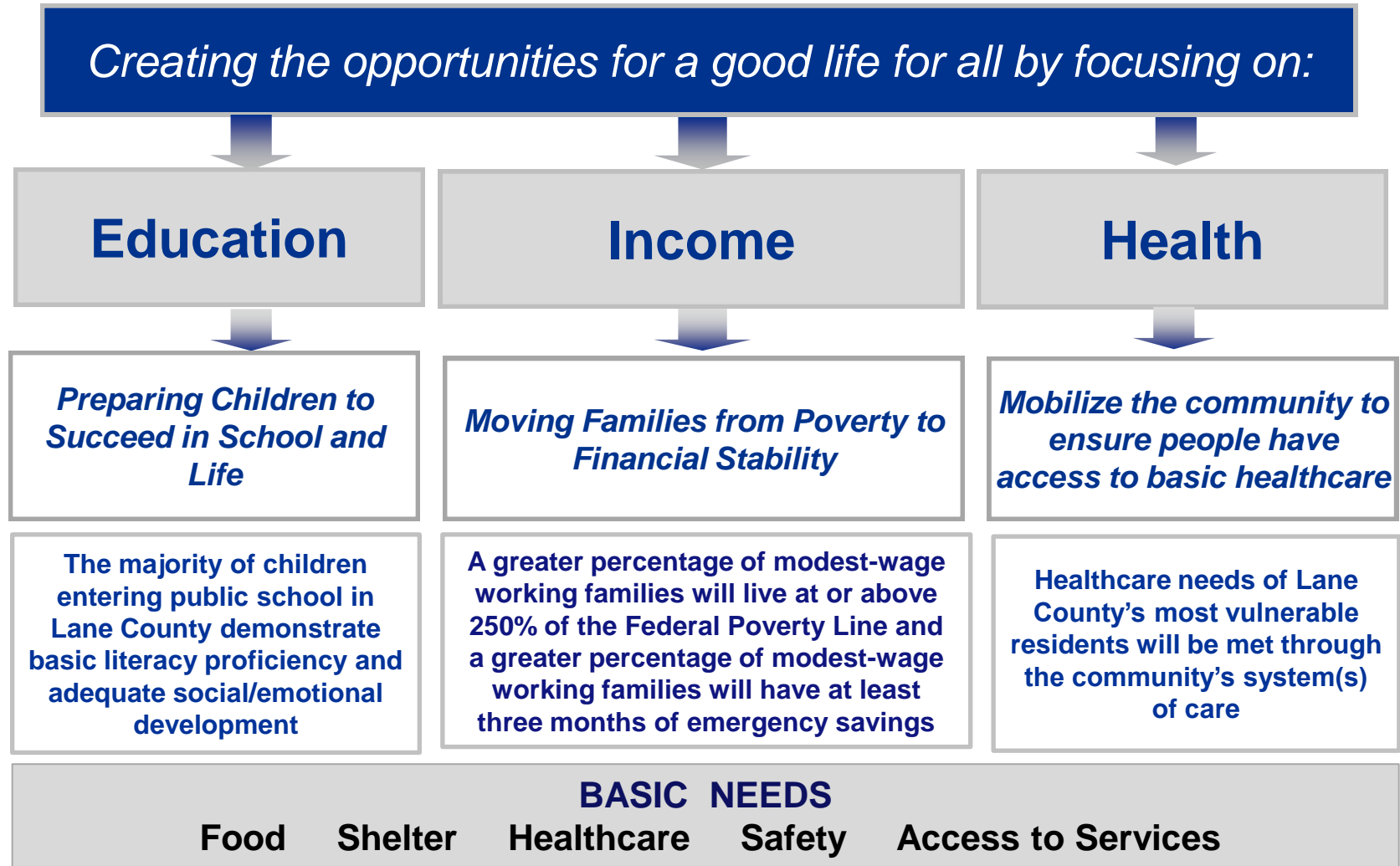
- By invitation only (invitation does not guarantee funding)
- Current programs are encouraged to apply
- Modification of services option for existing programs
- Limited number of new agencies invited to submit LOIs
 - Letters of Intent due: January 20, 2012
- Scoring Specifications – increased emphasis on goal alignment

Community Investment Model



UWLC 2012 Community Investment Model

Advancing the Common Good



Questions??

Break-Out Sessions

Basic Needs
Education
Income
Health

Follow up questions?

Contact:

Chris Pryor

cpryor@unitedwaylane.org

541-741-6000 x 102