

A WORD FROM THE PRESIDENT AND CEO



I'm always grateful for the chance to reflect on our past year's work. When there are so many community needs to address—affordable housing, access to food and education, ensuring youth reach their potential—we sometimes forget to acknowledge what we've accomplished.

This past year, United Way implemented a new investment framework to effect deeper and longer-lasting change, and determined how to even better evaluate the impact of our work.

Donors, volunteers, and sector leaders from across the county helped launch this new framework, and made decisions on which programs and initiatives can help us reach our vision. You can read more about this new direction on the next page.

We are proud to share some of what has transpired this past year—over \$7.7 million invested in Lane County, over 300 families accessed safe housing, more than 7,000 books distributed to students—but we also know the real impact is the pathways these resources open up for our community's future success.

Change doesn't happen overnight. We are grateful for your support, and hope you'll continue to LIVE UNITED and help make this vision of success possible for the next generation of our community.

UNITED WAY OF LANE COUNTY

creates opportunities for a better life for all.

OUR VISION

We work to create a community where all kids are successful in school and life—because we believe healthy successful kids are the best investment in our future.

HOW WE DO IT

We implement a four-part strategy to effect change: assess community needs, raise funds and invest in the community, mobilize people to action, and measure results.

OUR PRIORITY OUTCOMES



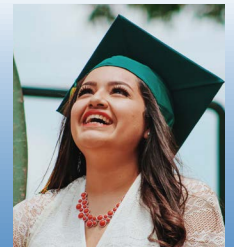
Families are healthy and stable



Children enter kindergarten ready to learn



Students are successful in elementary school



Youth are on the pathway to productivity



BECAUSE OF YOU

In 2018-19, United Way of Lane County was able to invest **\$7,795,437** in our community.*

FAMILY HEALTH AND STABILITY

73,314

emergency food boxes distributed

305

families and youth accessed shelter

6,698

people connected to physical, mental, and dental services

EARLY CHILDHOOD SUCCESS

1,840

children provided with high-quality programming to support their development

188

children received free, high-quality preschool

1,923

children and families on average were supported through a family resource center

ELEMENTARY SCHOOL SUCCESS

7,399

books were distributed to 1,057 K-2 students through BookFest

20,088

dental kits assembled and distributed to children through the Dental Kit initiative

YOUTH PATHWAYS

161

youth received academic support, enrichment, peer leadership, career training and financial literacy programs

* Through Community Impact Grants & Programs, Community Agency Investments, and Donor Restricted Funds

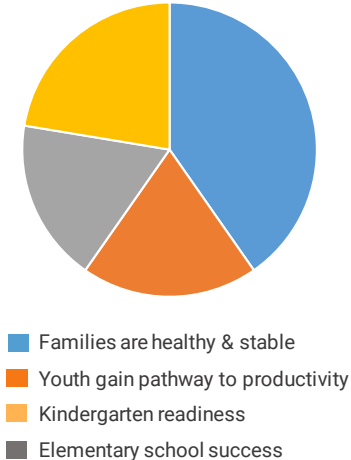
INVESTING IN LASTING CHANGE

UNITED WAY DEBUTS NEW INVESTMENT FRAMEWORK FOR LANE COUNTY

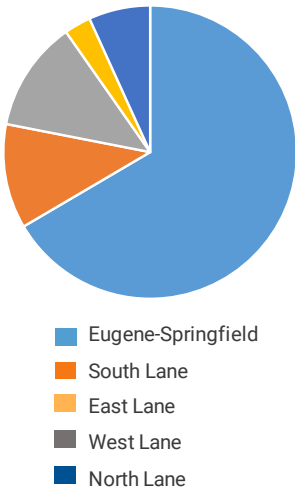
2018-19 was the culmination of a significant effort by United Way to deepen its positive impact in Lane County. After two years of thoughtful discussion, consultation, and study of best practices across the country, United Way introduced a new investment framework and portfolio that **will affect the long-term future of the community for the better**. The new framework includes making focused grants of larger amounts, investing in collaborative, cross-sector partnerships, and supporting preventative “upstream” strategies—ensuring the investments make the greatest possible impact in Lane County. This past spring, the United Way Board of Directors approved 24 local initiatives to receive one-, two- and three-year grants totaling \$2.6 million through this new framework, with \$1.1 million beginning in July 2019.

HOW WE ARE INVESTING

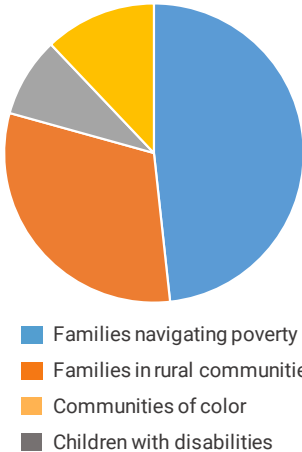
INVESTMENTS BY OUTCOME



GEOGRAPHIC DISTRIBUTION



PRIORITY POPULATIONS



IN THIS NEW GRANT CYCLE:

100+ APPLICATIONS	\$4.6 MILLION	55 VOLUNTEERS	800+ HOURS	24 INITIATIVES	\$1.1 MILLION
for funding received	in funding requests	led the review process	reviewing applications, presentations, and deliberating on proposals	selected for funding, benefiting over 30 agencies	will be invested in 2019-20

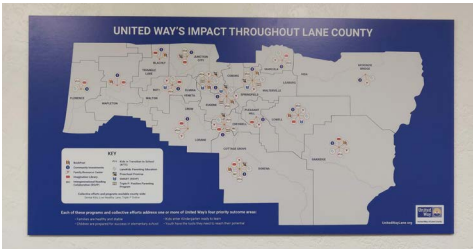
Contributions to our general Live United Fund make these investments possible. To learn more about our 2019 investments, visit unitedwaylane.org/campaign-resources.

OTHER 2018-19 SUCCESSES



VOLUNTEERISM

This past year, United Way mobilized **1,500 community members to volunteer** throughout the county. Projects ranged from reading with students, assembling dental hygiene kits for K-3rd graders, reviewing agency funding proposals, and more. You can find your own volunteer opportunities: visit the Volunteer United website at volunteeruwlane.org.



IMPACT AROUND LANE COUNTY

United Way is committed to investing in Lane County's rural communities. To show the breadth of our investments, programs, and initiatives across the county, view our new Lane County Impact map, found online at unitedwaylane.org/county-impact.



IMPROVING HEALTH

This past year, Live Healthy Lane engaged **over 900 community members and partners** in the Community Health Needs Assessment process, through community and partner surveys, feedback discussions, and focus groups with underrepresented communities. Learn more about Live Healthy Lane at livehealthylane.org.

2018-19
BOARD OF DIRECTORS

DR. RICK KINCADE

Chair
Lane County

DR. CHRIS PARRA

Chair Elect
Bethel School District

STEPHANIE JENNINGS

Secretary
City of Eugene

SCOTT PURCELL

Treasurer
Hawes Financial Group

NICK FROST

Member At Large
Hershner Hunter, LLP

BRAD SMITH

Past Chair
Moss Adams, LLP

BRIDGET BAKER

Baker Family Foundation

DR. GUSTAVO BALDERAS

Eugene School District 4J

ZACK BLALACK

Ameriprise Financial

MARIAN BLANKENSHIP

Pacificsource Health Plans

RON GREEN

Oregon Pacific Bank

COURTNEY GRIESEL

City of Springfield

A.J. JACKSON

Lane Transit District

MARY ANNE MCMURREN

Community Volunteer

STEVE MOKROHISKY

Lane County

BEVERLEE POTTER

Agency Liaison
FOOD For Lane County

STUART RAMSING

Klarity Solutions

ERIC RICHARDSON

NAACP

JOEL ROSENBERG

Community Volunteer

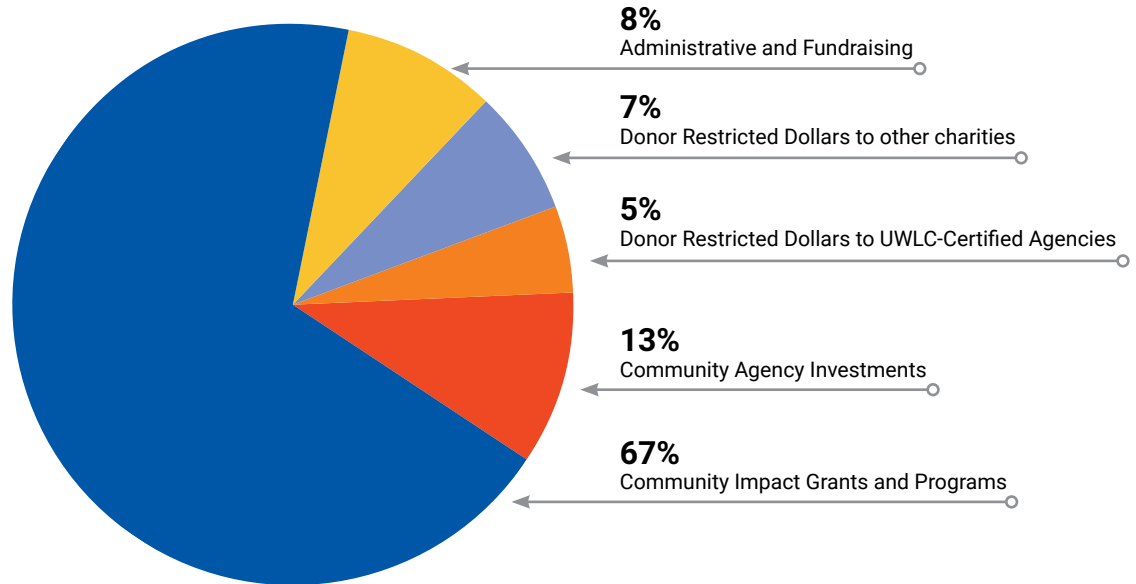
LISA SMITH

AccessOne

GAYLE TRUAX

Royal Caribbean International

HOW YOUR UNITED WAY DOLLARS WERE INVESTED



(numbers derived from June 30, 2019 audited financial statements)

PUBLIC SUPPORT AND REVENUE

Public Support	2018/19	2017/18
Campaign Results (net of uncollectible)	\$2,947,441	\$3,045,919
<i>Net Campaign Revenue</i>	\$2,947,441	\$3,045,919
Planned Giving Endowment contribution	\$89,123	\$250,000
Total Public Support	\$3,036,564	\$3,295,919

Revenue	2018/19	2017/18
Grant Revenue	\$4,556,544	\$5,261,597
Sponsorships, Fees, and other	\$271,716	\$389,709
Total Revenue	\$ 4,828,260	\$5,651,306
Total Public Support and Revenue	\$7,864,824	\$8,947,225

2018/19 EXPENSES

Program Grants	\$5,682,337	\$5,870,044
Community Impact Program Services	\$1,097,996	\$841,837
Donor Designation to 501(c)3 Agencies	\$1,015,104	\$1,031,028
Support Service – Administrative	\$275,057	\$269,549
Support Service – Fundraising	\$422,415	\$512,856
Total Allocations and Expenses	\$8,492,909	\$8,525,314
Increase (decrease) in Net Assets	(\$628,085)	\$426,502
Net Assets Beginning of Year	\$3,586,454	\$3,159,952
Net Assets End of Year	\$2,958,369	\$3,586,454

HOW YOU CAN MAKE AN IMPACT:

VOLUNTEER

Find opportunities at
volunteeruwlane.org

STAY UP-TO-DATE

Sign up for eNews at
unitedwaylane.org/enews

DONATE

Contribute to the
LIVE UNITED fund at
unitedwaylane.org/donate